

The logo for "Venecija" features a stylized red and blue graphic on the left, followed by the word "Venecija" in a blue, 3D-style font with a white outline. The background of the entire advertisement is a composite image: the top half shows a woman in a red shawl on a gondola in Venice, and the bottom half shows a close-up of a red, wavy steel roof tile.

STEEL ROOF TILE SHEET OF MODULAR TYPE

List of contents

Why Venecja - steel roof tile sheet of modular type?	3
Module of steel roof tile sheet Venecja 350	4
Innovative solution	5
Module of steel roof tile sheet Venecja 400	6
Innovative solution	7
Raw materials	8
Swedish quality of steel	9
Raw materials	10
D-Matt coating	11
Roof in colour of Venice	12
Benefits and guarantee	13
Our patent for roof	14
	15
Our patent for roof	16
	17
Our patent for roof	18
	19
Our patent for roof	20
	21
Our patent for roof	22
	23
Roof in D-Matt coating	24
	25
Automated packaging system	26
Storage	27
System of roof accessories	28
	29
Branches addresses	30
	35

Why Venecja - steel roof tile sheet of modular type?



Stimulates the imagination

System of BUDMAT®'s steel roof tile sheets has been successfully creating house since many years being its culmination and great complement. Offer of our products has been already enriched by unique steel roof tile sheet of modular type Venecja.

Products offered by BUDMAT® fulfill dreams about ideal house, ensures safety, best quality and the longest guarantee on market - even up to 50 years*.

It is unique product that guarantees quick assembly, fail-safe usage and exclusive look of ceramic tile. Budmat guarantees complex roof solutions.

For innovative steel roof tile sheet of modular type Venecja we will choose especially for you set of flashings, steel roof system Flamingo and even steel fence system.

*detailed terms and conditions of guarantee are available at the manufacturer

Module of steel roof tile sheet Venecja 350



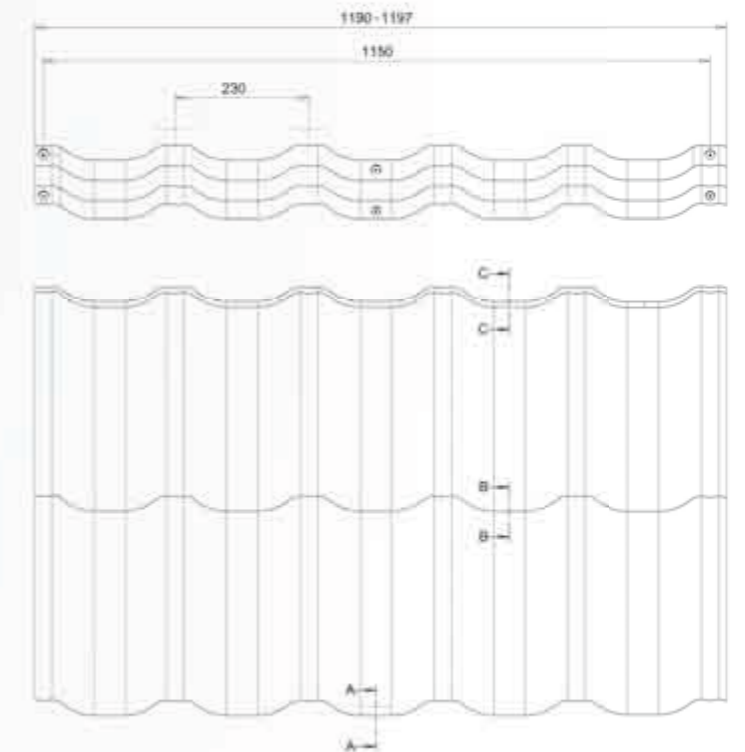
Module
350
mm

Technical parameters

Sheet total width [mm]: ~1190-1197
Sheet cover width [mm]: 1150
Fold height [mm]: 35
Wave height [mm]: 26
Total height [mm]: 61
Sheet total length [mm]: 736
Sheet cover length [mm]: 700
Module length [mm]: 350
Width between waves peaks [mm]: 230
Sheet cover area [m²]: 0,805
Sheet weight [kg]: 3,7



Innovative solutions



Roof tile sheet of modular type Venecja is innovative and unique product designed for roofing. It is distinguished by its unique shape - 5 bottom waves and 6 peaks - and moreover it has specially formed edges thanks to which assembly is easy and sheets adjoin to each other perfectly on roof.

Additional pressings of wave bottom edge emphasize the unique shape of steel roof tile sheet of modular type Venecja and bring to mind exclusive ceramic tile.

Specially designed sheet front edge allows free drainage of water condensate and air circulation. This solution increases product corrosion resistance and protects roof from rain and snow lingering on its surface.

Steel roof tile sheet Venecja is solid and durable product, aesthetic and innovative in form.

Module of steel roof tile sheet Venecja 400



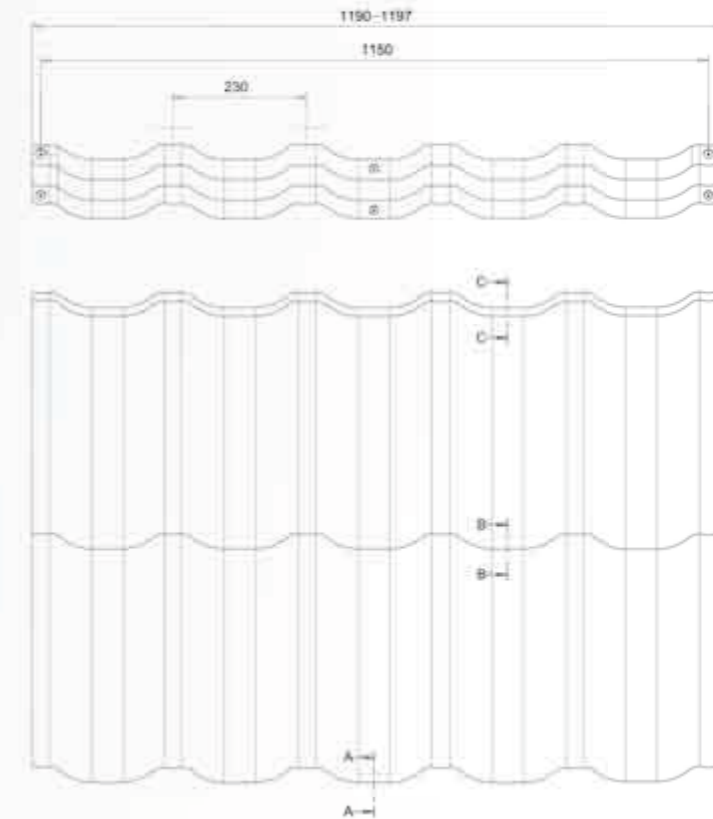
Module
400
mm

Technical parameters

Sheet total width [mm]: -1190-1197
 Sheet cover width [mm]: 1150
 Fold height [mm]: 35
 Wave height [mm]: 26
 Total height [mm]: 61
 Sheet total length [mm]: 836
 Sheet cover length [mm]: 800
 Module length [mm]: 400
 Width between waves peaks [mm]: 230
 Sheet cover area [m²]: 0,920
 Sheet weight [kg]: 4,2



Innovative solutions



In the industrial design of steel roof tile sheet Venecja we registered inter alia:

- special hollows on edges, it means places where sheets fold at each other thus joints are invisible,
- special pressings in shape of bowl creates sockets for screws and washers providing tightness of joint,
- innovative solution of front edge of sheet does not cause any scratches on sheets surface and thus corrosion centre does not form,
- pressings on transverse edges of joined sheets create tight joints thus sunlight refracts in the same way in each place where two sheets are joined,
- factory-made holes for screws and gaskets - contractor receives sheets already prepared for sheet joining, so there is no necessity to drill additional holes thus there are no metal filings and corrosion centres.



50 Years of Guarantee
 SSAB PRELAQ X-MATT

Venecja steel sheet is produced from high quality Swedish steel which is extremely resistant to corrosion and in which specially designed coating is applied - Prelaq X-Matt (of 30µm on decorative side). The other side of steel roof sheet is protected by lacquer of epoxy type.

Prelaq X-Matt resistance to corrosion was verified by exposure in aggressive marine and industrial environments. Prelaq X-Matt belongs to category of anticorrosion coatings according to norm EN 10169.

It guarantees long product life, increases mechanical scratch resistance and resistance to UV radiation. Furthermore Prelaq X-Matt coating ensures homogeneous colors of steel sheet irrespective of material from which is was produced - therefore Venecja steel sheets are always identical.

SSAB steel mill gives written guarantee that there is no color difference in different batches of steel sheets. Geometry of steel roof tile sheet Venecja is designed in such a way that moisture does not gather on sheets and water drops can not cause corrosion centres - what especially concerns sheet bending



BUDMAT®'s steel roof tile sheet Venecja X-Matt is made from steel of the highest quality. It is manufactured from the Swedish steel SSAB. Cooperating closely with material suppliers and customers SSAB is constantly improving metal manufacturing technology. Material used in production is high-strength steel, hot-dip galvanized with zinc coat at list 275 g/m2, properly protected from corrosion. What is more steel used for production of Venecja is covered with unique coating Prelaq X-Matt.

BUDMAT® as the only manufacturer on Polish market used steel with this coating for production of modular type of steel roof tile sheet Venecja.

X-MATT
SSAB
PRELAQ®
 COLORFUL BUILDING



30 Years of Guarantee

D-MATT



ArcelorMittal

BUDMAT's steel roof tile sheet Venecja is manufactured also from steel produced in Germany by steel mill Arcelor Mittal Eisenhuttentad. Steel sheet coated with special coating D-Matt means durability, precision and up to 30 years of guarantee. Steel roof tile sheet Venecja with D-Matt coating is available in the most popular colours.

Venecja in D-Matt coating is distinguished by uniquely decorative appearance. Steel sheets with D-Matt coating have beautiful grain structure which satisfies even the most sophisticated tastes. Their decorative values appreciate all who look for roof material which will allow them to stand out and enjoy beauty and durability of the roof.

D-Matt coating - organically coated steel

- Decorative coating thickness:
35 microns
- Top coat:
10 microns (primer)
25 microns (outer layer)
- Adhesion (T-bending):
≤ 1 T
- Resistance to cracking on bending (T-bending):
≤ 2 T
- Impact resistance:
18 J
- Scratch resistance (Clemen):
≥ 1,5 kg
- Corrosion resistance:
Category RC3
- UV resistance:
test QUV (UVA + H₂O) (2000 hours)

Roof in colour of Venice



Venice - magical, unique, colourful - simply perfect for inspired artists and great pieces of art. Italian Venice has always been seen in that way and just as perfect and colourful is Venecja - steel roof tile sheet of modular type manufactured by BUDMAT. Beautiful line, shape of ceramic tile, modern, perfectly laying on roof - this is steel roof tile sheet of modular type Venecja which stimulates the imagination.

In the permanent offer of BUDMAT Venecja is available in many the most popular colours to choose and in two unique coatings: Swedish Prelaq X-Matt and German D-Matt. These coatings not only have great protective features but also meet great decorative value. Thus steel roof tile sheet Venecja is dedicated to almost every customer and it will be perfect as a roof covering of each building.

Wide range of BUDMAT's product is extremely advantageous for Customer to whom we may offer comprehensive implementation: from roof, through system of roof flashings and accessories, to selecting steel gutter system Flamingo® and steel fence system, all in the same colour.



Benefits and guarantee

Benefits of steel roof tile sheet Venecja:

- the longest guarantee on market for this kind of product - even up to 50 years*,
- unique design of steel roof tile sheet manufactured from the highest quality Swedish steel delivered by renowned steel mill SSAB
- protected by unique protective coating Prelaq X-Matt which gives guarantee of stability
- easy and fast assembly thanks to patent solutions
- the most economic roof solution - steel roof tile sheet Venecja gives about 20% less waste comparing to standard steel roof covers
- innovative and unique design bringing to mind ceramic tiles
- does not need special preservation
- 5 colors of steel roof tile sheet
- complexity of realization - it is possible to create perfect roof together with flashings, Steel Gutter System Flamingo® and steel fence system produced by BUDMAT®
- steel sheets of Venecja are identical and light - there is no problem with sheets adjustment and their carrying on roof
- the contractor does not have to mark points where screws should be applied - holes are factory-prepared
- module 350mm of steel roof tile sheet Venecja ensures less usage of roof battens and screws which means shorter worktime for contractor
- wide cover area - 1150 mm
- on one standard pallet there may be 350 steel sheets which is 281,75 m² (module 350mm) and 322 m² (module 400mm) of roof cover - perfect saving of place during transport and storage
- vertical overpresses on steel roof sheet are enforced by additional bend of sheet to the back of module - higher stiffness of steel roof sheet and whole cover
- it is not sensitive to drying and rafter movements
- it is possible to easily fit roof windows on installed roof - it is not necessary to remove the whole slope - you just need to remove one sheet

*detailed terms and conditions of guarantee are available at the manufacturer

Our patent for roof



Colour
015
BLACK
X-MATT

RAL
9005
BLACK
D-MATT



STEEL ROOF TILE SHEET OF MODULAR TYPE

New steel roof tile sheet Venecja means many patents and innovative solutions thanks to which customers receive durable, safe and reliable roof over their heads.

Factory prepared holes for screws mean easy and fast assembly on roof. These holes are drilled at an angle which enables safe and easy screwdriver leading without roof surface scratching. Gently pressed hollows guarantee perfect adjoining of steel roof sheets. Moreover, this solution enables quicker assembly without need of drilling. Thanks to this we avoid metal filings and corrosion centres.

Pressings are specially prepared for screws and gaskets assembly which ensure additional tightness and joint aesthetics which provides advantage of Venecja over concrete or ceramic tiles.

Our patent for roof



Colour
757
CHERRY RED
X**MATT**



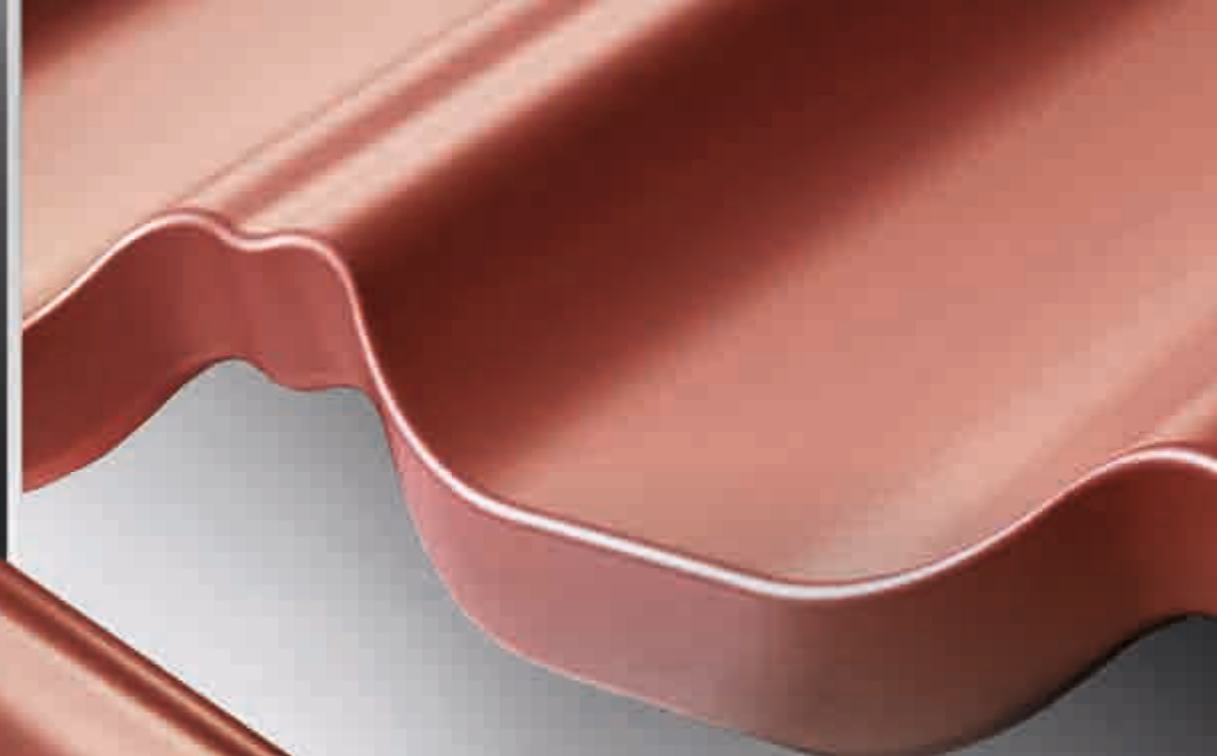
STEEL ROOF TILE SHEET OF MODULAR TYPE

Application of specially profiled bends of material makes the process of sheet joining easier. Moreover each sheet of Venecja roof cover has specially designed edges thanks to which they perfectly adjust to each other and are easy to assembly on roof.

Overpresses on transverse edges of overlapped sheets create perfectly consistent connection which gives effect of homogenous light refraction in all places where two sheets are joined.

What is important sheets of Venecja are identical so that we save time. There is no necessity to unpack all the sheets. Because of small weight of sheets (3,7kg for module 350mm and 4,2kg for module 400mm) the assembly may be performed by one person only and may be done on few roof slopes at the same time.

Our patent for roof



Colour

742
BRICK RED
X^{MATT}



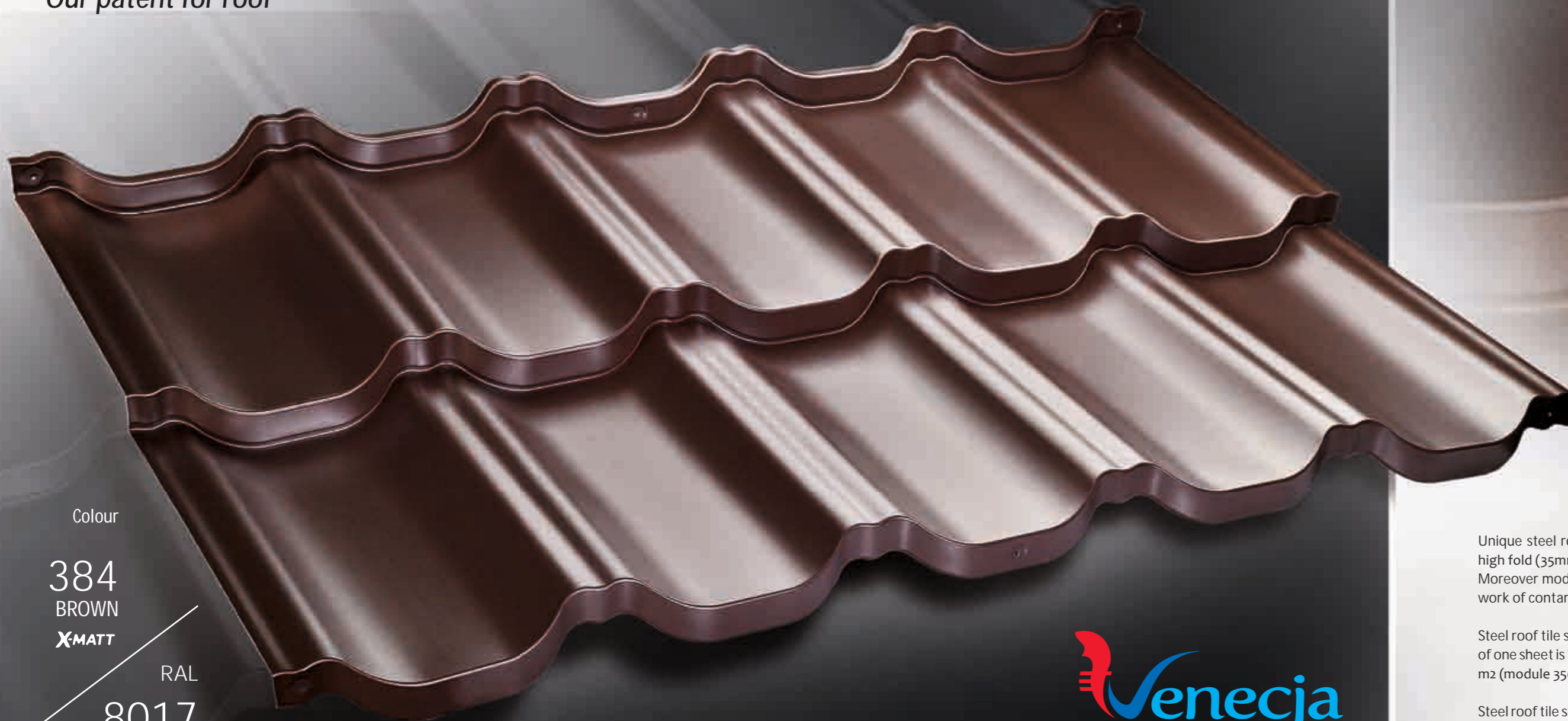
STEEL ROOF TILE SHEET OF MODULAR TYPE

Specially designed front edge of steel roof tile sheet Venecja allows free drainage of condensate water and free air circulation.

This solution increases product corrosion resistance and protects roof from precipitation lingering on its area.

In Polish Patent Office was registered the innovative solution of front edge of Venecja steel sheet which does not cause scratches of sheet surfaces. Thus Venecja roof keeps aesthetic look and is not exposed to corrosion by accidental damages.

Our patent for roof



Colour

384

BROWN

X-MATT

RAL

8017

BROWN

D-MATT



STEEL ROOF TILE SHEET OF MODULAR TYPE

Unique steel roof tile sheet of modular type Venecja produced by BUDMAT® has very high fold (35mm) which not only stiffens our roof, but also brings to mind ceramic roofs. Moreover module of Venecja ensures less usage of wooden batten, screws and shorter work of contractor on roof.

Steel roof tile sheet Venecja may be assembled with normal farmer screws. Cover width of one sheet is 1150 mm and on one standard pallet may be 350 steel sheets which is 281,75 m² (module 350mm) and 322m² (module 400mm) of roof.

Steel roof tile sheet of modular type Venecja means great saving of time and space during transport and storage which has influence on performance and speed of realization of ordered roof.

Our patent for roof



Colour

455

GRAPHITE

X-MATT

RAL

7024

GRAPHITE

D-MATT



STEEL ROOF TILE SHEET OF MODULAR TYPE

Venecja is distinguished by its unique shape: 5 bottom waves and 6 peaks.

Special additional pressings of bottom wave edge underline unique character of modular steel roof tile sheet and brings to mind shape of exclusive ceramic sheet. This solution additionally stiffens product surface and protects roof area from precipitation lingering on roof area.

Moreover joining particular steel sheets during assembly we may freely regulate the roof slope to the roof angle.

Steel roof tile sheet Venecja is durable product aesthetic and innovative in its shape.

Roof in D-Matt coating



STEEL ROOF TILE SHEET OF MODULAR TYPE

Steel roof tile sheet of modular type Venecja is manufactured also in D-Matt coating. Steel with this coating is produced by German steel mill Arcelor Mittal Eisenhüttenstadt.

Venecja in D-Matt coating means 30 years of guarantee and uniquely decorative roof.

D-Matt coating thanks to its matt and grainy structure makes roof look very aesthetic. Coating D-Matt beautifully reflects the light, so we can get the effect of a glittering roof.



Excellent space saving during transport and storage.

On one standard pallet there may be up to 350 steel sheets which is 281,75 m² (module 350mm) and 322 m² (module 400mm) of roof cover.

All sheets are identical!

Modern and fully automated production of steel roof tile sheet Venecja guarantees 100% repeatability of each sheet.

Venecja 350

1210x810x920mm
1320kg

Venecja 400

1210x1010x690mm
1500kg

Steel roof tile sheet of modular type Venecja is packed on wooden standard pallet. One pack contains 350 protected sheets.

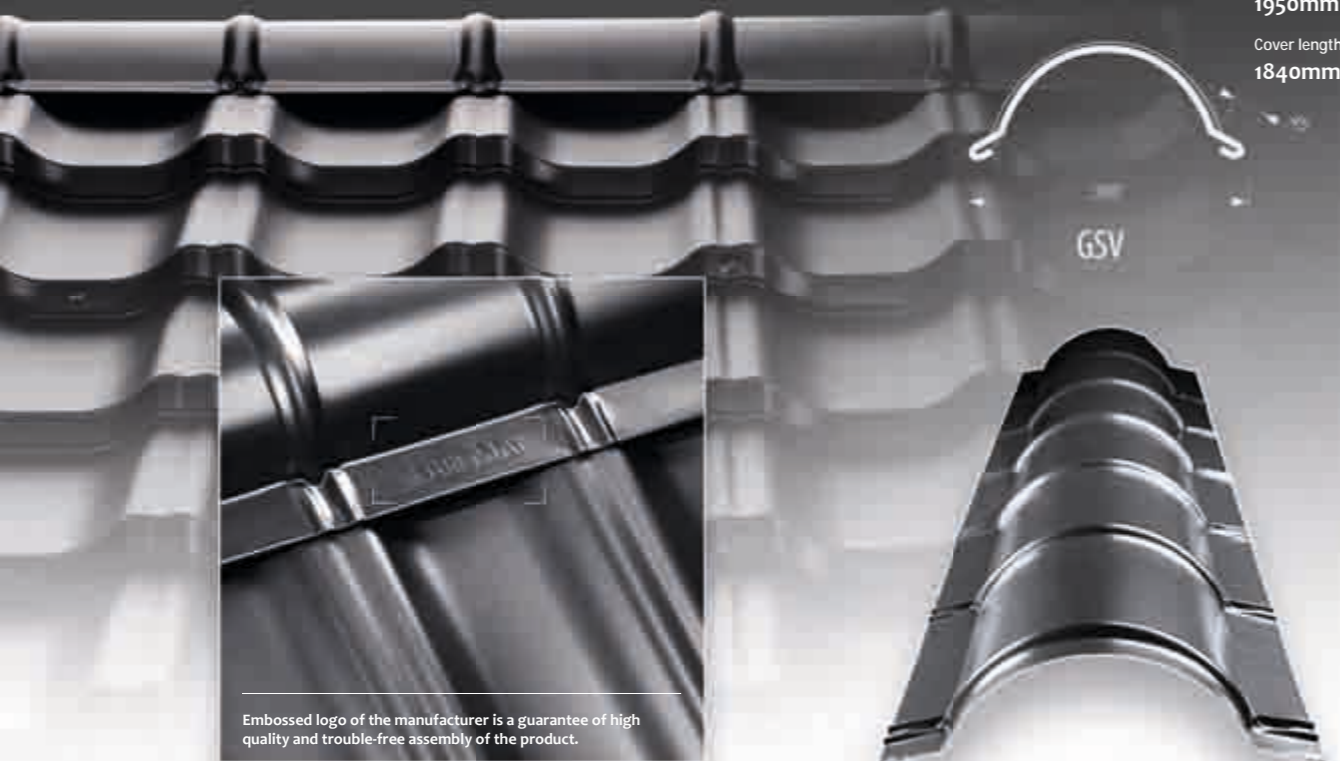
To protect steel roof tile sheets in transport and during storage at packaging stage specially designed styrofoam spacers are applied and they separate each of 35 sheet layers. They have shape reflecting steel roof tile sheet geometry. These spacers stabilize each sheet package and protect them from movement during transport.

Additional protection is vertical cardboard corners and cardboard cover. Everything is also wrapped by stretch foil in such a way that it prevents water from leaking inside the package. This type of packaging guarantees that the product is fully protected from mechanical damages and also from adverse weather conditions.

There is possibility to order any number of sheets for the specific roof*

*detailed informations at Distributors

System of roof accessories



Verge trim for steel roof tile sheet Venecja

Verge trim – finishing element in the junction point of roof slopes both on horizontal and diagonal ridge. To provide tightness between verge trim and steel roof sheet profiled gaskets for verge trim or universal gaskets should be applied.

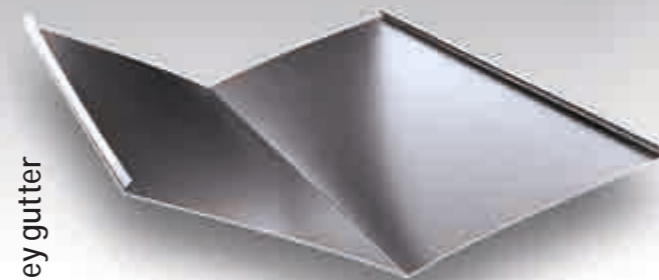
GSV verge trim was specially designed for steel roof tile sheet of modular type Venecja. The ideal shape of verge trim is adapted to waves and peaks of steel roof sheet with which it great assemblies.

POLYETHYLENE SEALS:

- for verge trim,
- for gutter flashing,
- universal, triangular, self-adhesive,
- expanded.

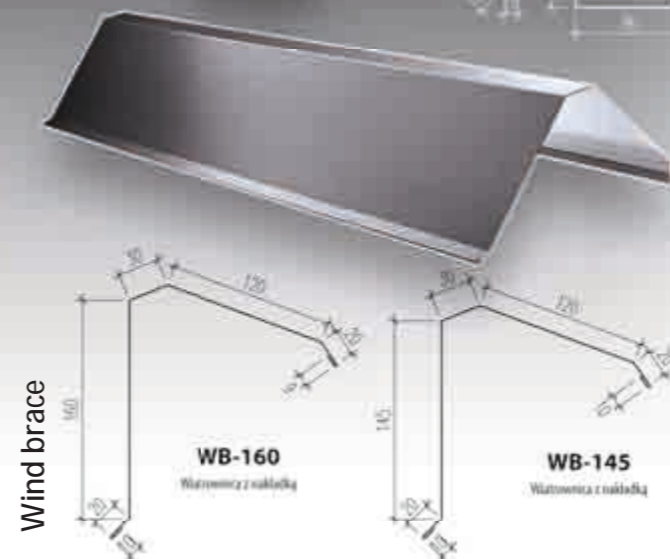
Under ridge tile should be used tape ridge. On the top strip is provided ventilation grille with comb.

Valley gutter



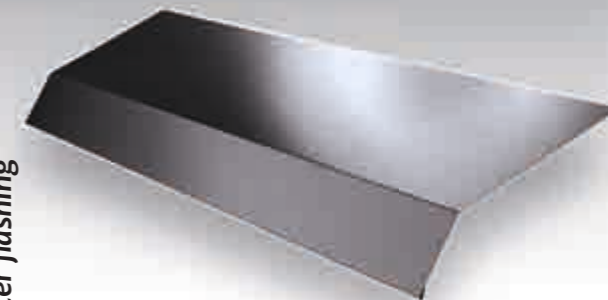
VALLEY GUTTER - is used for water drainage from joining roof slopes. To provide tightness between valley gutter and steel roof sheets special gaskets or universal gaskets should be applied.

Wind brace



WIND BRACE - it protects steel roof sheets from being torn off by strong winds. It may be also applied as a finishing element of roof side gables. Tightness of the roof may be additionally increased by application of wedge gaskets.

Gutter flashing



GUTTER FLASHING - element which drains water from roof slopes directly into the gutter. Application of profiled gaskets for gutter flashing provides tightness between joints and makes loose snow blowing impossible.

System of roof accessories



STEEL ROOF TILE SHEET OF MODULAR TYPE



455
GRAPHITE

XMATT



Reference roofs

Beautiful houses with Venecja roof and thousands of pleased customers





STEEL ROOF TILE SHEET OF MODULAR TYPE



455
GRAPHITE

X-MATT



Reference roofs

Beautiful houses with Venecja roof and thousands of pleased customers





STEEL ROOF TILE SHEET OF MODULAR TYPE



455
GRAPHITE
X-MATT



Reference roofs

Beautiful houses with Venecja roof and thousands of pleased customers





Manufacturer:

BUDMAT® Bogdan Więcek

PŁOCK, ul. Otolińska 25

info@budmat.pl

www.budmat.pl

Caution! BUDMAT®'s product catalogue of Steel Roof Sheet of Modular Type Venecja is not an offer according to commercial law and is only an exemplary presentation of BUDMAT®'s products. Colour scheme showed in the catalogue may differ from actual product colour.

Project and realization: BUDMAT® Marketing Photos: BUDMAT® Marketing, ARTLINE Marek Bartuś Date of realization: February 2015
Copyright connected with this catalogue is under protection of Act on Copyright and Related Rights of Feb. 4th, 1994 (Official Law Journal from 1994 No 24).
Possibility of using, copying and distributing of materials included in catalogue together with photos, drawings, graphics, etc. are limited by copyright.